

# DC OIL-LESS AIR COMPRESSORS



Stainless Steel Air Tanks



Chrome Air Compressors



Stainless Steel Air Horns

Battery Operated Back-pack Sprayers



成運電機股份有限公司  
CHERNG YUEN ELECTRIC & MECHANICAL CO., LTD

E-mail: rvcicada@ms23.hinet.net website: <http://www.airhorn.com.tw>

ISO-9002

CE





**DC-3211C**

Permanent Magnetic 12V/ 180PSI/ 12AMPS/ 1.97kg 165\*100\*160mm

0.5GallonTank			1GallonTank		
Fill Rate	amps		Fill Rate	amps	
0 To 50PSI	18 seconds	12.8	0 To 50PSI	37 seconds	12.6
0 To 100PSI	47 seconds	12.5	0 To 100PSI	1min.37sec	12.55
0 To 150PSI	1min.05sec	12	0 To 150PSI	2min.12sec	12.1

Supply Voltage :13.8 Volts



**DC-3214C**

Permanent Magnetic 12V/ 350PSI/ 22AMPS/ 3.4kg 200\*100\*160mm

1GallonTank			2GallonTank			2.5GallonTank		
Fill Rate	amps		Fill Rate	amps		Fill Rate	amps	
0 To 50PSI	23 seconds	21.6	0 To 50PSI	42 seconds	17.84	0 To 50PSI	59 seconds	18.25
0 To 100PSI	50 seconds	22.2	0 To 100PSI	1min.40sec	20.5	0 To 100PSI	2min.16sec	21.23
0 To 150PSI	1min.25sec	21.79	0 To 150PSI	2min.54sec	20.7	0 To 150PSI	3min.54sec	21.80
0 To 180PSI	1min.52sec	21.2	0 To 180PSI	3min.40sec	20.55	0 To 180PSI	5min.10sec	21.70
0 To 200PSI	2min.13sec	20.47	0 To 200PSI	4min.26sec	20.40	0 To 200PSI	6min.07sec	21.50

Supply Voltage :13.8 Volts



**DC-3614C**

Permanent Magnetic 12V/ 330PSI/ 27AMPS/ 3.47kg 210\*100\*160mm

2GallonTank			2.5GallonTank			5GallonTank		
Fill Rate	amps		Fill Rate	amps		Fill Rate	amps	
0 To 50PSI	37seconds	22.79	0 To 50PSI	52seconds	21.7	0 To 50PSI	1min.47sec	21.62
0 To 100PSI	1min.26sec	24.8	0 To 100PSI	2min.02sec	24.95	0 To 100PSI	4min.05sec	25.72
0 To 150PSI	2min.30sec	24.92	0 To 150PSI	3min.41sec	25.6	0 To 150PSI	8min	27.6
0 To 180PSI	3min.19sec	24.2	0 To 180PSI	4min.56sec	25.74	0 To 180PSI	10min59sec	26.15
0 To 200PSI	3min.55sec	23.4	0 To 200PSI	6min.02sec	25.2	0 To 200PSI	13min.22sec	26.07

Supply Voltage :13.8 Volts



**DC-4014C**

Permanent Magnetic 12V/ 320PSI/ 31AMPS/ 3.5kg 210\*100\*160mm

2.5GallonTank			5GallonTank		
Fill Rate	amps		Fill Rate	amps	
0 To 50PSI	35seconds	27.6	0 To 50PSI	1min.05sec	27
0 To 100PSI	1min.20sec	28.9	0 To 100PSI	2min.29sec	31
0 To 150PSI	2min.17sec	29.4	0 To 150PSI	4min.34sec	31.8
0 To 180PSI	3min	28.89	0 To 180PSI	6min.06sec	31.52
0 To 200PSI	3min.37sec	27.75	0 To 200PSI	7min.16sec	31.31

Supply Voltage :13.8 Volts



**DC-5015C**

Permanent Magnetic 12V/ 350PSI/ 35AMPS/ 8kg 290\*150\*230mm

5GallonTank		
Fill Rate	amps	
0 To 50PSI	0 min.43sec	35
0 To 100PSI	1 min.32sec	41.6
0 To 150PSI	2 min.47sec	43
0 To 180PSI	3 min.42sec	42.8
0 To 200PSI	4 min.22sec	41.5

Supply Voltage :13.8 Volts



**DC-5515C**

Permanent Magnetic 12V/ 330PSI/ 45.4AMPS/ 8kg 315\*150\*230mm

5GallonTank		
Fill Rate	amps	
0 To 50PSI	0min.34sec	45.4
0 To 100PSI	1 min.18sec	49.4
0 To 150PSI	2min.27sec	49.3
0 To 180PSI	3min.18sec	46.5
0 To 200PSI	3min.59sec	44

Supply Voltage :13.8 Volts



**DC-3211S**

Permanent Magnetic 12V/ 180PSI/ 12AMPS/ 1.97kg 165\*100\*160mm

0.5GallonTank			1GallonTank		
Fill Rate	amps		Fill Rate	amps	
0 To 50PSI	18 seconds	12.8	0 To 50PSI	37 seconds	12.6
0 To 100PSI	47 seconds	12.5	0 To 100PSI	1min.37sec	12.55
0 To 150PSI	1min.05sec	12	0 To 150PSI	2min.12sec	12.1

Supply Voltage :13.8 Volts



**DC-3214S**

Permanent Magnetic 12V/ 350PSI/ 22AMPS/ 3.4kg 200\*100\*160mm

1GallonTank			2GallonTank			2.5GallonTank		
Fill Rate	amps		Fill Rate	amps		Fill Rate	amps	
0 To 50PSI	23 seconds	21.6	0 To 50PSI	42 seconds	17.84	0 To 50PSI	59 seconds	18.25
0 To 100PSI	50 seconds	22.2	0 To 100PSI	1min.40sec	20.5	0 To 100PSI	2min.16sec	21.23
0 To 150PSI	1min.25sec	21.79	0 To 150PSI	2min.54sec	20.7	0 To 150PSI	3min.54sec	21.80
0 To 180PSI	1min.52sec	21.2	0 To 180PSI	3min.40sec	20.55	0 To 180PSI	5min.10sec	21.70
0 To 200PSI	2min.13sec	20.47	0 To 200PSI	4min.26sec	20.40	0 To 200PSI	6min.07sec	21.50

Supply Voltage :13.8 Volts



**DC-3614S**

Permanent Magnetic 12V/ 330PSI/ 27AMPS/ 3.47kg 210\*100\*160mm

2GallonTank			2.5GallonTank			5GallonTank		
Fill Rate	amps		Fill Rate	amps		Fill Rate	amps	
0 To 50PSI	37seconds	22.79	0 To 50PSI	52seconds	21.7	0 To 50PSI	1min.47sec	21.62
0 To 100PSI	1min.26sec	24.8	0 To 100PSI	2min.02sec	24.95	0 To 100PSI	4min.05sec	25.72
0 To 150PSI	2min.30sec	24.92	0 To 150PSI	3min.41sec	25.6	0 To 150PSI	8min	27.6
0 To 180PSI	3min.19sec	24.2	0 To 180PSI	4min.56sec	25.74	0 To 180PSI	10min59sec	26.15
0 To 200PSI	3min.55sec	23.4	0 To 200PSI	6min.02sec	25.2	0 To 200PSI	13min.22sec	26.07

Supply Voltage :13.8 Volts



**DC-4014S**

Permanent Magnetic 12V/ 320PSI/ 31AMPS/ 3.5kg 210\*100\*160mm

2.5GallonTank			5GallonTank		
Fill Rate	amps		Fill Rate	amps	
0 To 50PSI	35seconds	27.6	0 To 50PSI	1min.05sec	27
0 To 100PSI	1min.20sec	28.9	0 To 100PSI	2min.29sec	31
0 To 150PSI	2min.17sec	29.4	0 To 150PSI	4min.34sec	31.8
0 To 180PSI	3min	28.89	0 To 180PSI	6min.06sec	31.52
0 To 200PSI	3min.37sec	27.75	0 To 200PSI	7min.16sec	31.31

Supply Voltage :13.8 Volts



**DC-5015S**

Permanent Magnetic 12V/ 350PSI/ 35AMPS/ 8kg 290\*150\*230mm

5GallonTank		
Fill Rate	amps	
0 To 50PSI	0 min.43sec	35
0 To 100PSI	1 min.32sec	41.6
0 To 150PSI	2 min.47sec	43
0 To 180PSI	3 min.42sec	42.8
0 To 200PSI	4 min.22sec	41.5

Supply Voltage :13.8 Volts



**DC-5515S**

Permanent Magnetic 12V/ 330PSI/ 45.4AMPS/ 8kg 315\*150\*230mm

5GallonTank		
Fill Rate	amps	
0 To 50PSI	0min.34sec	45.4
0 To 100PSI	1 min.18sec	49.4
0 To 150PSI	2min.27sec	49.3
0 To 180PSI	3min.18sec	46.5
0 To 200PSI	3min.59sec	44

Supply Voltage :13.8 Volts



**DC-3214LC**

Permanent Magnetic 12V/ 350PSI/ 16AMPS/ 4.13kg 200\*100\*160mm

0.5GallonTank			1GallonTank		
Fill Rate	amps		Fill Rate	amps	
0 To 50PSI	18 seconds	12.8	0 To 50PSI	37 seconds	12.6
0 To 100PSI	47 seconds	12.5	0 To 100PSI	1min.37sec	12.55
0 To 150PSI	1min.05sec	12	0 To 150PSI	2min.12sec	12.1

Supply Voltage :13.8 Volts



**DC-3614LC**

Permanent Magnetic 12V/ 330PSI/ 20AMPS/ 4.13kg 230\*100\*160mm

1GallonTank Fill Rate		amps	2GallonTank Fill Rate		amps	2.5GallonTank Fill Rate		amps
0 To 50PSI	26 seconds	14.82	0 To 50PSI	37 seconds	13.68	0 To 50PSI	58 seconds	13.46
0 To 100PSI	57 seconds	16	0 To 100PSI	1min.32sec	15.78	0 To 100PSI	2min.17sec	16.1
0 To 150PSI	1min.38sec	16.4	0 To 150PSI	2min.40sec	16.3	0 To 150PSI	3min.55sec	16.45
0 To 180PSI	2min.07sec	16.2	0 To 180PSI	3min.30sec	16.2	0 To 180PSI	5min.09sec	16.16
0 To 200PSI	2min.30sec	15.9	0 To 200PSI	4min.07sec	15.9	0 To 200PSI	6min.07sec	15.79

Supply Voltage :13.8 Volts

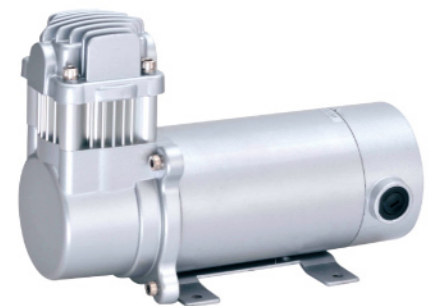


**DC-4014LC**

Permanent Magnetic 12V/ 320PSI/ 27AMPS/ 4.13kg 230\*100\*160mm

2GallonTank Fill Rate		amps	2.5GallonTank Fill Rate		amps	5GallonTank Fill Rate		amps
0 To 50PSI	30 seconds	20.61	0 To 50PSI	42 seconds	21.1	0 To 50PSI	1min.14sec	21
0 To 100PSI	1min.11sec	23.3	0 To 100PSI	1min.39sec	24.68	0 To 100PSI	3min.10sec	24.98
0 To 150PSI	2min.01sec	25.7	0 To 150PSI	2min.47sec	26.3	0 To 150PSI	5min.44sec	27.2
0 To 180PSI	2min.34sec	25.65	0 To 180PSI	3min.39sec	25.65	0 To 180PSI	7min.36sec	27.2
0 To 200PSI	3min	25	0 To 200PSI	4min.19sec	25.25	0 To 200PSI	9min.07sec	26.7

Supply Voltage :13.8 Volts

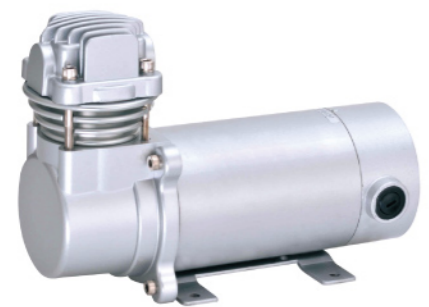


**DC-3214LS**

Permanent Magnetic 12V/ 350PSI/ 16AMPS/ 4.13kg 200\*100\*160mm

1GallonTank Fill Rate		amps	2GallonTank Fill Rate		amps	2.5GallonTank Fill Rate		amps
0 To 50PSI	26 seconds	14.82	0 To 50PSI	37 seconds	13.68	0 To 50PSI	58 seconds	13.46
0 To 100PSI	57 seconds	16	0 To 100PSI	1min.32sec	15.78	0 To 100PSI	2min.17sec	16.1
0 To 150PSI	1min.38sec	16.4	0 To 150PSI	2min.40sec	16.3	0 To 150PSI	3min.55sec	16.45
0 To 180PSI	2min.07sec	16.2	0 To 180PSI	3min.30sec	16.2	0 To 180PSI	5min.09sec	16.16
0 To 200PSI	2min.30sec	15.9	0 To 200PSI	4min.07sec	15.9	0 To 200PSI	6min.07sec	15.79

Supply Voltage :13.8 Volts



**DC-3614LS**

Permanent Magnetic 12V/ 330PSI/ 20AMPS/ 4.13kg 230\*100\*160mm

2GallonTank Fill Rate		amps	2.5GallonTank Fill Rate		amps	5GallonTank Fill Rate		amps
0 To 50PSI	32 seconds	18.4	0 To 50PSI	50 seconds	17.52	0 To 50PSI	1min.24sec	16.8
0 To 100PSI	1min.19sec	19.95	0 To 100PSI	1min.58sec	19.9	0 To 100PSI	3min.22sec	18.8
0 To 150PSI	2min.17sec	20.7	0 To 150PSI	3min.26sec	20.36	0 To 150PSI	6min.25sec	20
0 To 180PSI	3min.01sec	20.14	0 To 180PSI	4min.38sec	19.2	0 To 180PSI	8min.40sec	19.2
0 To 200PSI	3min.36sec	19.3	0 To 200PSI	5min.32sec	18.8	0 To 200PSI	10min.35sec	18.6

Supply Voltage :13.8 Volts



**DC-4014LS**

Permanent Magnetic 12V/ 320PSI/ 27AMPS/ 4.13kg 230\*100\*160mm

2GallonTank Fill Rate		amps	2.5GallonTank Fill Rate		amps	5GallonTank Fill Rate		amps
0 To 50PSI	30 seconds	20.61	0 To 50PSI	42 seconds	21.1	0 To 50PSI	1min.14sec	21
0 To 100PSI	1min.11sec	23.3	0 To 100PSI	1min.39sec	24.68	0 To 100PSI	3min.10sec	24.98
0 To 150PSI	2min.01sec	25.7	0 To 150PSI	2min.47sec	26.3	0 To 150PSI	5min.44sec	27.2
0 To 180PSI	2min.34sec	25.65	0 To 180PSI	3min.39sec	25.65	0 To 180PSI	7min.36sec	27.2
0 To 200PSI	3min	25	0 To 200PSI	4min.19sec	25.25	0 To 200PSI	9min.07sec	26.7

Supply Voltage :13.8 Volts



**DC-3211PC**

Permanent Magnetic 12V/ 180PSI/ 12AMPS/ 2.64kg 190\*125\*190mm

0.5GallonTank			1GallonTank		
Fill Rate	amps		Fill Rate	amps	
0 To 50PSI	18 seconds	12.8	0 To 50PSI	37 seconds	12.6
0 To 100PSI	47 seconds	12.5	0 To 100PSI	1min.37sec	12.55
0 To 150PSI	1min.05sec	12	0 To 150PSI	2min.12sec	12.1

Supply Voltage :13.8 Volts

**DC-3214PC**

Permanent Magnetic 12V/ 350PSI/ 22AMPS/ 4kg 230\*125\*195mm

1GallonTank			2GallonTank			2.5GallonTank		
Fill Rate	amps		Fill Rate	amps		Fill Rate	amps	
0 To 50PSI	23 seconds	21.6	0 To 50PSI	42 seconds	17.84	0 To 50PSI	59 seconds	18.25
0 To 100PSI	50 seconds	22.2	0 To 100PSI	1min.40sec	20.5	0 To 100PSI	2min.16sec	21.23
0 To 150PSI	1min.25sec	21.79	0 To 150PSI	2min.54sec	20.7	0 To 150PSI	3min.54sec	21.80
0 To 180PSI	1min.52sec	21.2	0 To 180PSI	3min.40sec	20.55	0 To 180PSI	5min.10sec	21.70
0 To 200PSI	2min.13sec	20.47	0 To 200PSI	4min.26sec	20.40	0 To 200PSI	6min.07sec	21.50

Supply Voltage :13.8 Volts



**DC-3614PC**

Permanent Magnetic 12V/ 330PSI/ 27AMPS/ 4kg 230\*125\*195mm

2GallonTank			2.5GallonTank			5GallonTank		
Fill Rate	amps		Fill Rate	amps		Fill Rate	amps	
0 To 50PSI	37seconds	22.79	0 To 50PSI	52seconds	21.7	0 To 50PSI	1min.47sec	21.62
0 To 100PSI	1min.26sec	24.8	0 To 100PSI	2min.02sec	24.95	0 To 100PSI	4min.05sec	25.72
0 To 150PSI	2min.30sec	24.92	0 To 150PSI	3min.41sec	25.6	0 To 150PSI	8min	27.6
0 To 180PSI	3min.19sec	24.2	0 To 180PSI	4min.56sec	25.74	0 To 180PSI	10min59sec	26.15
0 To 200PSI	3min.55sec	23.4	0 To 200PSI	6min.02sec	25.2	0 To 200PSI	13min.22sec	26.07

Supply Voltage :13.8 Volts



**DC-4014PC**

Permanent Magnetic 12V/ 330PSI/ 27AMPS/ 4kg 230\*125\*195mm

2.5GallonTank			5GallonTank		
Fill Rate	amps		Fill Rate	amps	
0 To 50PSI	35seconds	27.6	0 To 50PSI	1min.05sec	27
0 To 100PSI	1min.20sec	28.9	0 To 100PSI	2min.29sec	31
0 To 150PSI	2min.17sec	29.4	0 To 150PSI	4min.34sec	31.8
0 To 180PSI	3min	28.89	0 To 180PSI	6min.06sec	31.52
0 To 200PSI	3min.37sec	27.75	0 To 200PSI	7min.16sec	31.31

Supply Voltage :13.8 Volts



**DC-5015PC**

Permanent Magnetic 12V/ 350PSI/ 35AMPS/ 9.4kg 340\*150\*275mm

5GallonTank		
Fill Rate	amps	
0 To 50PSI	0 min.43sec	35
0 To 100PSI	1 min.32sec	41.6
0 To 150PSI	2 min.47sec	43
0 To 180PSI	3 min.42sec	42.8
0 To 200PSI	4 min.22sec	41.5

Supply Voltage :13.8 Volts



**DC-5515PC**

Permanent Magnetic 12V/ 330PSI/ 45.4AMPS/ 9.4kg 340\*150\*275mm

5GallonTank		
Fill Rate	amps	
0 To 50PSI	0 min.34sec	45.4
0 To 100PSI	1 min.18sec	49.4
0 To 150PSI	2 min.27sec	49.3
0 To 180PSI	3 min.18sec	46.5
0 To 200PSI	3 min.59sec	44

Supply Voltage :13.8 Volts





**DC-3211PS**

Permanent Magnetic 12V/ 180PSI/ 12AMPS/ 2.64kg 190\*125\*190mm

0.5GallonTank			1GallonTank		
Fill Rate	amps		Fill Rate	amps	
0 To 50PSI	18 seconds	12.8	0 To 50PSI	37 seconds	12.6
0 To 100PSI	47 seconds	12.5	0 To 100PSI	1min.37sec	12.55
0 To 150PSI	1min.05sec	12	0 To 150PSI	2min.12sec	12.1

Supply Voltage :13.8 Volts



**DC-3211C-4L**

CHROME AIR COMPRESSOR + STAINLESS STEEL TANK  
DC-12V  
MAX.AMPS:12.6A  
0-150PSI: 2MIN.12SEC  
LENGTH:350\*150\*340mm  
WEIGHT:4.34KG



**DC-3211S-4L**

AIR COMPRESSOR + STEEL TANK  
DC-12V  
MAX.AMPS:12.6A  
0-150PSI: 2MIN.12SEC  
LENGTH:350\*150\*340mm  
WEIGHT:4.34KG

**DC-3214PS**

Permanent Magnetic 12V/ 350PSI/ 22AMPS/ 4kg 230\*125\*195mm

1GallonTank			2GallonTank			2.5GallonTank		
Fill Rate	amps		Fill Rate	amps		Fill Rate	amps	
0 To 50PSI	23 seconds	21.6	0 To 50PSI	42 seconds	17.84	0 To 50PSI	59 seconds	18.25
0 To 100PSI	50 seconds	22.2	0 To 100PSI	1min.40sec	20.5	0 To 100PSI	2min.16sec	21.23
0 To 150PSI	1min.25sec	21.79	0 To 150PSI	2min.54sec	20.7	0 To 150PSI	3min.54sec	21.80
0 To 180PSI	1min.52sec	21.2	0 To 180PSI	3min.40sec	20.55	0 To 180PSI	5min.10sec	21.70
0 To 200PSI	2min.13sec	20.47	0 To 200PSI	4min.26sec	20.40	0 To 200PSI	6min.07sec	21.50

Supply Voltage :13.8 Volts



**DC-3614PS**

Permanent Magnetic 12V/ 330PSI/ 27AMPS/ 4kg 230\*125\*195mm

2GallonTank			2.5GallonTank			5GallonTank		
Fill Rate	amps		Fill Rate	amps		Fill Rate	amps	
0 To 50PSI	37seconds	22.79	0 To 50PSI	52seconds	21.7	0 To 50PSI	1min.47sec	21.62
0 To 100PSI	1min.26sec	24.8	0 To 100PSI	2min.02sec	24.95	0 To 100PSI	4min.05sec	25.72
0 To 150PSI	2min.30sec	24.92	0 To 150PSI	3min.41sec	25.6	0 To 150PSI	8min	27.6
0 To 180PSI	3min.19sec	24.2	0 To 180PSI	4min.56sec	25.74	0 To 180PSI	10min59sec	26.15
0 To 200PSI	3min.55sec	23.4	0 To 200PSI	6min.02sec	25.2	0 To 200PSI	13min.22sec	26.07

Supply Voltage :13.8 Volts



**DC-3214C-4L**

CHROME AIR COMPRESSOR + STAINLESS STEEL TANK  
DC-12V  
MAX. AMPS:22.2A  
0-200PSI: 2MIN.13SEC  
LENGTH:350\*150\*320mm  
WEIGHT:5.91KG



**DC-3214S-4L**

AIR COMPRESSOR + STEEL TANK  
DC-12V  
MAX. AMPS:22.2A  
0-200PSI: 2MIN.13SEC  
LENGTH:350\*150\*320mm  
WEIGHT:5.91KG

**DC-4014PS**

Permanent Magnetic 12V/ 320PSI/ 31AMPS/ 4kg 230\*125\*195mm

2.5GallonTank			5GallonTank		
Fill Rate	amps		Fill Rate	amps	
0 To 50PSI	35seconds	27.6	0 To 50PSI	1min.05sec	27
0 To 100PSI	1min.20sec	28.9	0 To 100PSI	2min.29sec	31
0 To 150PSI	2min.17sec	29.4	0 To 150PSI	4min.34sec	31.8
0 To 180PSI	3min	28.89	0 To 180PSI	6min.06sec	31.52
0 To 200PSI	3min.37sec	27.75	0 To 200PSI	7min.16sec	31.31

Supply Voltage :13.8 Volts



**DC-5015PS**

Permanent Magnetic 12V/ 350PSI/ 35AMPS/ 9.4kg 340\*150\*275mm

5GallonTank		
Fill Rate	amps	
0 To 50PSI	0 min. 43 sec	35
0 To 100PSI	1 min. 32 sec	41.6
0 To 150PSI	2 min. 47 sec	43
0 To 180PSI	3 min. 42 sec	42.8
0 To 200PSI	4 min. 22 sec	41.5

Supply Voltage :13.8 Volts



**DC-5515PS**

Permanent Magnetic 12V/ 330PSI/ 45.4AMPS/ 9.4kg 340\*150\*275mm

5GallonTank		
Fill Rate	amps	
0 To 50PSI	0 min.34 sec	45.4
0 To 100PSI	1 min.18 sec	49.4
0 To 150PSI	2 min.27 sec	49.3
0 To 180PSI	3 min.18 sec	46.5
0 To 200PSI	3 min.59 sec	44

Supply Voltage :13.8 Volts



**DC-3214C-6L**

CHROME AIR COMPRESSOR + STAINLESS STEEL TANK  
DC-12V  
MAX. AMPS:22.2A  
0-200PSI: 3MIN. 35SEC  
LENGTH:520\*150\*320mm  
WEIGHT:6.23KG



**DC-3214C-8L**

CHROME AIR COMPRESSOR +  
STAINLESS STEEL TANK  
DC-12V  
MAX. AMPS:20.7A  
0-200PSI: 4MIN.26SEC  
LENGTH:380\*200\*360mm  
WEIGHT:6.5KG



**DC-3214S-8L**

AIR COMPRESSOR +STEEL TANK  
DC-12V  
MAX. AMPS:20.7 A  
0-200PSI: 4MIN.26SEC  
LENGTH:380\*200\*360mm  
WEIGHT:6.5KG



**DC-4014C-8L**

CHROME AIR COMPRESSOR +  
STAINLESS STEEL TANK  
DC-12V  
MAX. AMPS:29.4A  
0-200PSI: 3MIN.17SEC  
LENGTH:380\*200\*360mm  
WEIGHT:6KG



**DC-4014S-8L**

AIR COMPRESSOR +STEEL TANK  
DC-12V  
MAX. AMPS:29.4A  
0-200PSI: 3MIN.17SEC  
LENGTH:380\*200\*360mm  
WEIGHT:6KG



**DC-3614C-8L**

CHROME AIR COMPRESSOR +  
STAINLESS STEEL TANK  
DC-12V  
MAX. AMPS:24.92A  
0-200PSI: 3MIN.55SEC  
LENGTH:380\*200\*360mm  
WEIGHT:6KG



**DC-3614S-8L**

AIR COMPRESSOR + STEEL TANK  
DC-12V  
MAX. AMPS:24.92A  
0-200PSI: 3MIN.55SEC  
LENGTH:380\*200\*360mm  
WEIGHT:6KG



**DC-4014C-10L**

CHROME AIR COMPRESSOR +  
STAINLESS STEEL TANK  
DC-12V  
MAX. AMPS: 29.4A  
0-200PSI: 3MIN.37SEC  
LENGTH:380\*200\*360mm  
WEIGHT:6KG



**DC-4014S-10L**

AIR COMPRESSOR +STEEL TANK  
DC-12V  
MAX. AMPS: 29.4A  
0-200PSI: 3MIN.37SEC  
LENGTH:380\*200\*360mm  
WEIGHT:6KG



**DC-3614C-10L**

CHROME AIR COMPRESSOR +  
STAINLESS STEEL TANK  
DC-12V  
MAX. AMPS:25.74A  
0-200PSI: 6MIN.02SEC  
LENGTH:440\*200\*360mm  
WEIGHT:6.5KG



**DC-3614S-10L**

AIR COMPRESSOR +STEEL TANK  
DC-12V  
MAX. AMPS:25.74A  
0-200PSI: 6MIN.02SEC  
LENGTH:440\*200\*360mm  
WEIGHT:6.5KG



**DC-5015C-20L**

CHROME AIR COMPRESSOR +  
STAINLESS STEEL TANK  
DC-12V  
MAX. AMPS:43A  
0-200PSI: 4MIN.22SEC  
LENGTH:500\*320\*210mm  
WEIGHT:16.5KG



**DC-5015S-20L**

AIR COMPRESSOR +STEEL TANK  
DC-12V  
MAX. AMPS:43A  
0-200PSI: 4MIN.22SEC  
LENGTH:500\*320\*210mm  
WEIGHT:18.3KG



**DC-5015-1L**

AIR COMPRESSOR + 1L STEEL TANK  
DC-12VOLT  
MAX. AMPS : 36Amps  
0-210PSI:17SEC  
LENGTH: 360 x 220 x 400 mm  
WEIGHT: 11.8KG



**DC-3214+B**

AIR COMPRESSOR  
DC-12VOLT  
MAX. AMPS : 22 Amps  
LENGTH: 250 x 240 x 350 mm  
WEIGHT: 9KG  
INCLUDE RECHARGE SET



**DC-3211+B**

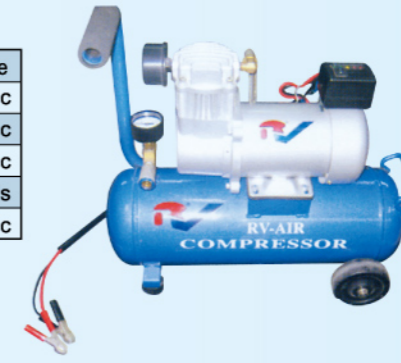
AIR COMPRESSOR  
DC-12VOLT  
MAX. AMPS : 12Amps  
LENGTH: 230 x 180 x 320 mm  
WEIGHT:6 KG  
INCLUDE RECHARGE SET



**DC-5015-10L Air Compressor**

- 12-Volt
- Permanent Magnetic Motor
- Amp Draw:36 Amps
- Dimensions: L 47x W19 x H42 CM
- Net Weight :14 KG
- 10L Air Tank
- DC-5015 model Air Compressor
- Pressure Switch (85 PSI on, 200 PSI off)

DC-5015-10L Tank	Fill Rate
0-105PSI	1min.05sec
0-145PSI	1min.40sec
0-200PSI	2min.45sec
85-145PSI	18 seconds
85-200PSI	1min.18sec



**DC-5015-12L Air Compressor**

- 12-Volt
- Permanent Magnetic Motor
- Amp Draw:36 Amps
- Dimensions: L 53x W26 x H51 CM
- Net Weight :17.5 KG
- 12L Air Tank
- DC-5015 model Air Compressor
- Pressure Switch (85 PSI on, 200 PSI off)

DC-5015-12L Tank	Fill Rate
0-105PSI	1min.23sec
0-145PSI	2min.17sec
0-200PSI	4min.10sec
85-145PSI	1min.05sec
85-200PSI	2min.55sec



**RV-3214B**

AIR COMPRESSOR + STEEL TANK  
DC-12VOLT 1/4HP  
WORK.P:115PSI  
LENGTH: 240\*100\*270mm  
WEIGHT:8 KG



**RV-3214-4LHB**

AIR COMPRESSOR + STEEL TANK  
DC-12VOLT 1/4HP  
WORK.P:134PSI  
LENGTH: 355 x 355 x 260 mm  
WEIGHT:13 KG



**DC-5015-8LH**

AIR COMPRESSOR + STEEL TANK  
DC-12VOLT 1HP  
WORK.P:134PSI  
LENGTH: 260 x 130 x 320 mm  
WEIGHT:15 KG



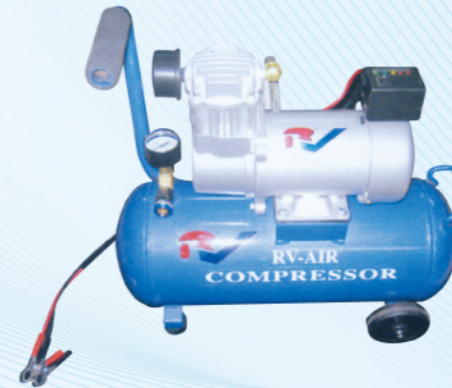
**DC-5015-8L**

AIR COMPRESSOR + STEEL TANK  
DC-12VOLT  
MAX. AMPS : 36Amps  
0-150PSI: 1MIN.22SEC  
LENGTH: 390 x 240 x 470 mm  
WEIGHT:15.6 KG



**TIRE CHANGING TOOL SET**

DC-3214 AIR COMPRESSOR + 1L TANK  
DC-12VOLT  
MAX.AMPS:22A  
LENGTH: 560 x 480 x 230 mm  
WEIGHT:17.5 KG



DC-5015-16L Tank	Fill Rate
0-105PSI	1min.45sec
0-145PSI	2min.55sec
0-200PSI	4min.50sec
85-145PSI	1min.15sec
85-200PSI	3min.10sec

**DC-5015-16L Air Compressor**

- 12-Volt
- Permanent Magnetic Motor
- Amp Draw:36 Amps
- Dimensions: L 53x W27 x H53 CM
- Net Weight :18 KG
- 16L Air Tank
- DC-5015 model Air Compressor
- Pressure Switch (85 PSI on, 200 PSI off)



DC-5015-22L Tank	Fill Rate
0-105PSI	2min.40sec
0-145PSI	4min.25sec
0-200PSI	7min.40sec
85-145PSI	1min.40sec
85-200PSI	5min

**DC-5015-22L Air Compressor**

- 12-Volt
- Permanent Magnetic Motor
- Amp Draw:36 Amps
- Dimensions: L 54x W35 x H61 CM
- Net Weight :20.5 KG
- 22L Air Tank
- DC-5015 model Air Compressor
- Pressure Switch (85 PSI on, 200 PSI off)



DC-5015-25L Tank	Fill Rate
0-105PSI	3min.05sec
0-145PSI	5min.15sec
0-200PSI	11min.40sec
85-145PSI	2min.25sec
85-200PSI	8min.50sec

**DC-5015-25L Air Compressor**

- 12-Volt
- Permanent Magnetic Motor
- Amp Draw:36 Amps
- Dimensions: L 57x W35 x H61 CM
- Net Weight :21.5KG
- 25L Air Tank
- DC-5015 model Air Compressor
- Pressure Switch (85 PSI on, 200 PSI off)



**RV-S120-2L**

STAINLESS STEEL AIR TANK  
LENGTH: 190\*120\*145mm  
WEIGHT: 0.83KG



**RV-S120-4L**

STAINLESS STEEL AIR TANK  
LENGTH: 365\*120\*145mm  
WEIGHT: 1.46KG



**RV-S120-6L**

STAINLESS STEEL AIR TANK  
LENGTH: 535\*120\*145mm  
WEIGHT: 2.22KG



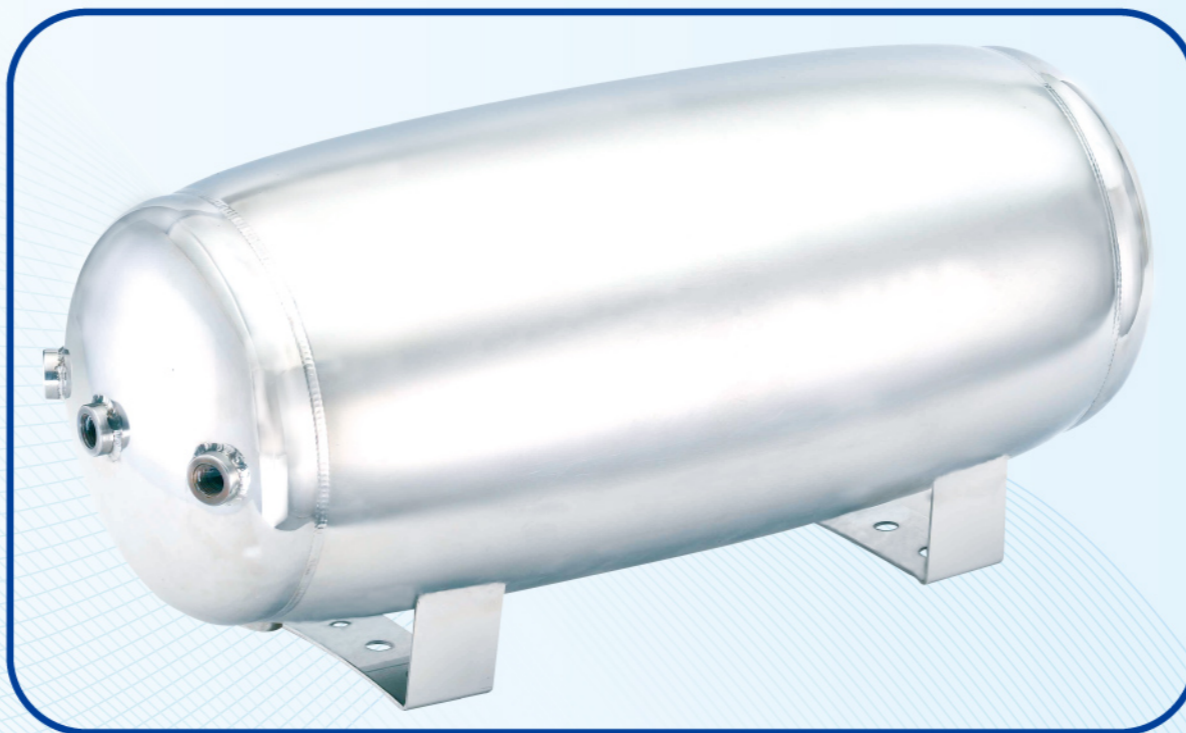
**RV-S235-20L**

STAINLESS STEEL AIR TANK  
LENGTH: 500\*240\*255mm  
WEIGHT: 5.14KG



**RV-S235-20LP**

STAINLESS STEEL AIR TANK  
LENGTH: 500\*240\*255mm  
WEIGHT: 5.14KG

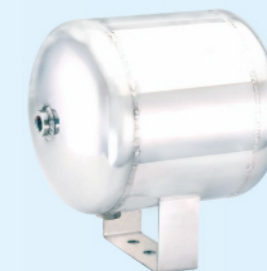


**Burst Test up to 1400 PSI  
would become this style**



**RV-S165-2L**

STAINLESS STEEL AIR TANK  
LENGTH: 110\*165\*210mm  
WEIGHT: 0.76KG



**RV-S165-4L**

STAINLESS STEEL AIR TANK  
LENGTH: 205\*165\*210mm  
WEIGHT: 1.33KG



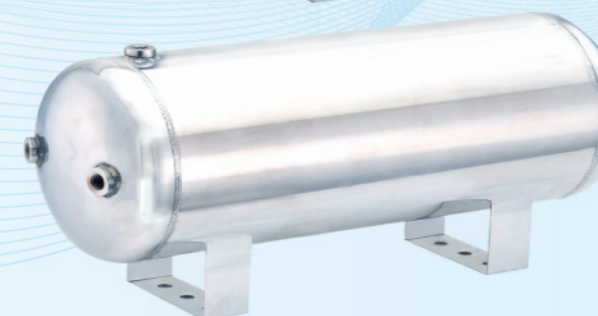
**RV-S165-6L**

STAINLESS STEEL AIR TANK  
LENGTH: 290\*165\*210mm  
WEIGHT: 1.77KG



**RV-S165-8L**

STAINLESS STEEL AIR TANK  
LENGTH: 380\*165\*210mm  
WEIGHT: 2.28KG



**RV-S165-10L**

STAINLESS STEEL AIR TANK  
LENGTH: 460\*165\*210mm  
WEIGHT: 2.66KG



**RV-S165-12L**

STAINLESS STEEL AIR TANK  
LENGTH: 565\*165\*210mm  
WEIGHT: 3.17KG



**RV-S165-15L**

STAINLESS STEEL AIR TANK  
LENGTH: 700\*165\*210mm  
WEIGHT: 3.76KG

**WELCOME TO  
CUSTOM YOUR OWN TANKS!!!**





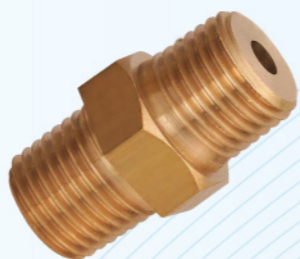
PRESSURE SWITCH



3/8PT CHECK VALVE



6mm AIR HOSE



1/4PT CHECK VALVE



FITTINGS FOR CONNECTOR



BATTERY & AMPS PROTECTION SWITCH



AC-3211S-4L

AIR COMPRESSOR + STEEL TANK  
AC-110/220V  
MAX. AMPS: 12.5A  
0-150PSI: 2MIN. 12SEC  
LENGTH: 350\*150\*340mm  
WEIGHT: 4.34KG



AC-3211C-4L

CHROME AIR COMPRESSOR +  
STAINLESS STEEL TANK  
AC-110/220V  
MAX. AMPS: 12.5A  
0-150PSI: 2MIN. 12SEC  
LENGTH: 350\*150\*340mm  
WEIGHT: 4.34KG



AC-5015-1L

AIR COMPRESSOR + 1L STEEL TANK  
AC-110/220V  
LENGTH: 360 x 220 x 400 mm  
WEIGHT: 13.5KG



AC-5015-8LH

AIR COMPRESSOR + STEEL TANK  
AC-110/220V  
LENGTH: 260\*130\*320mm  
WEIGHT: 16.5KG



AC-5515S-20L

AIR COMPRESSOR + STEEL TANK  
AC-110/220V  
LENGTH: 500\*320\*210mm  
WEIGHT: 18.3KG



AC-5015S-20L

AIR COMPRESSOR + STEEL TANK  
AC-110/220V  
LENGTH: 500\*320\*210mm  
WEIGHT: 18.3KG